



PROTON CITY INDUSTRIAL PARCEL 5

JULY 2024

Key Landmarks



Cities

- Kuala Lumpur: 50 mins
- Ipoh: 1 hr 20 mins



Port

- Port Klang: 1 hr 20 mins
- Penang Port: 2 hrs 45 mins



Airport

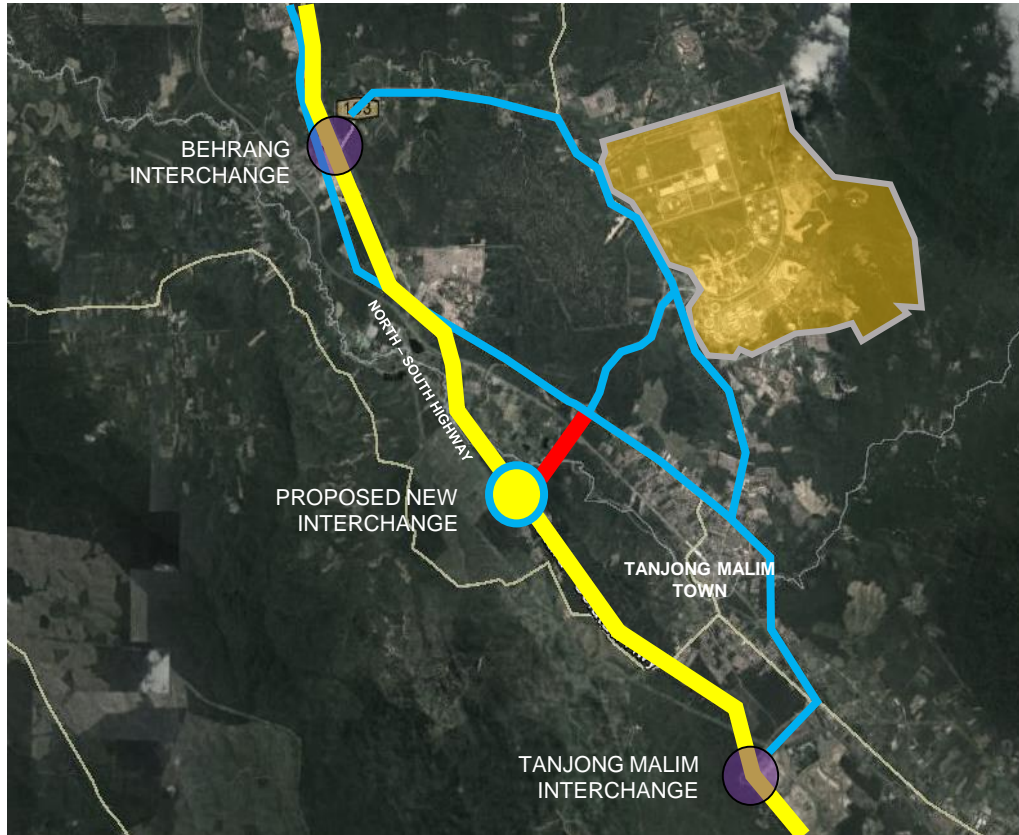
- KLIA: 1 hr 25 mins



Train

- Behrang Station : 15 mins
- Tg. Malim Station : 10 mins

Location



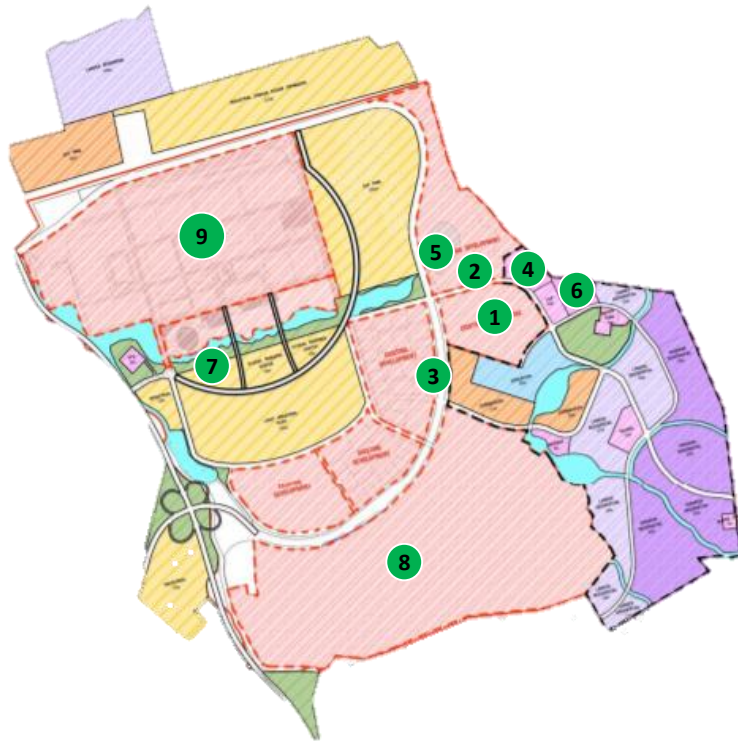
- The estimated RM32 billion investment by DRB-HICOM for The Automotive High-Tech Valley (AHTV), located in Tanjung Malim, aims to create a regional automotive hub for the development and production of Next Generation Vehicles.
- The AHTV was designed to capitalise on ASEAN's growing automotive needs and to enhance Malaysia's Auto sector whilst driving national growth.
- In line with the Government's aspiration for the automotive industry based on the NAP2020, focusing on Next Generation Vehicles, global competitiveness and regional leadership in high-tech parts and components.
- AHTV also seeks to spark advancements into new technologies including vehicle connectivity, intelligence and electrification. It will do so by building an automotive cluster and ecosystem comprising OEMs, vendors, ancillary service providers, educational institutions and a liveable city.
- The PROTON-GEELY partnership in PROTON will be the catalyst to accelerate growth of the automotive ecosystem in Tanjung Malim.

MASTER LAYOUT PLAN & DEVELOPMENT COMPONENTS



Proton Plant	1,278.90 acres	32%
UPSI Main Campus	822.62 acres	21%
Amenities & Utilities	769.24 acres	19%
Residential	714.25 acres	18%
Vendor Park	238.40 acres	6%
Commercial Area	176.59 acres	4%
Total	4,000.00 acres	100%

COMPLETED DEVELOPMENT



1 Residence



2 Commercial



3 Industrial



4 Post Office



5 Mosque



6 Schools



7 Sports Complex



8 University UPSI



9 PROTON Car Plant

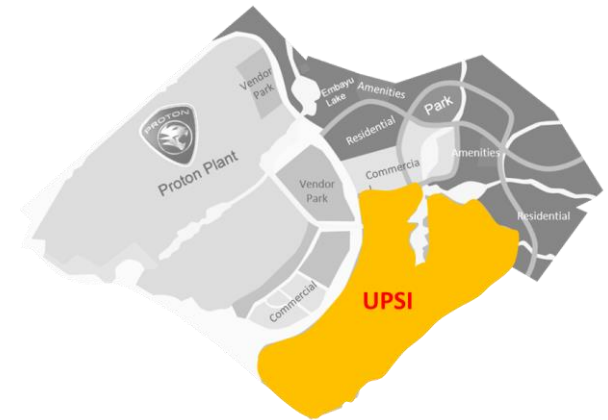
PROTON TANJUNG MALIM CAR PLANT



- By 2027, PROTON is expected to fully relocate their operations at their Proton Shah Alam Plant to their 1,280 acres state-of-the-art facility in Tanjung Malim.
- Proton's expansion plans in Tanjung Malim will spearhead the Automotive Hi-Tech Valley (AHTV).
- Proton's Tanjung Malim plant aims to be a regional production hub for right-hand drive vehicles whilst also becoming part of the group's vast global R&D network that includes facilities in across China, Europe, and even California, USA.



Sultan Idris Education University is a public university in the town of Tanjung Malim, Perak in Malaysia. First established in 1922 as a teachers college, it is one of the oldest functioning institutions of higher learning in Malaysia. This campus is being built on an 800-acre (3.2 km²) site in Proton City.



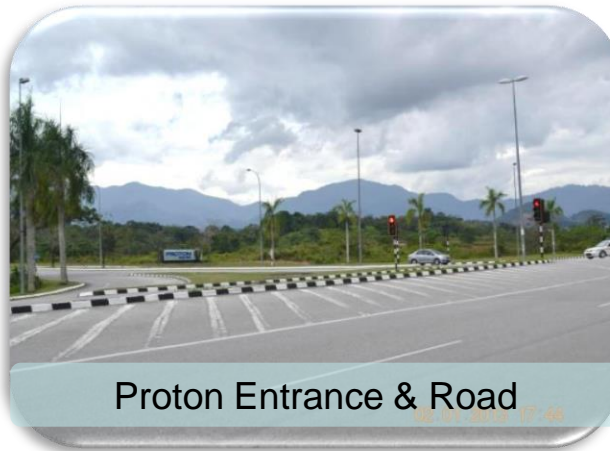
CURRENT INFRASTRUCTURE



Cloverleaf Interchange



Persiaran Perdana



Proton Entrance & Road



UPSI Interchange

AERIAL VIEW PARCEL 3, 4 & 5 INDUSTRIAL



PARCEL 5 AERIAL VIEW

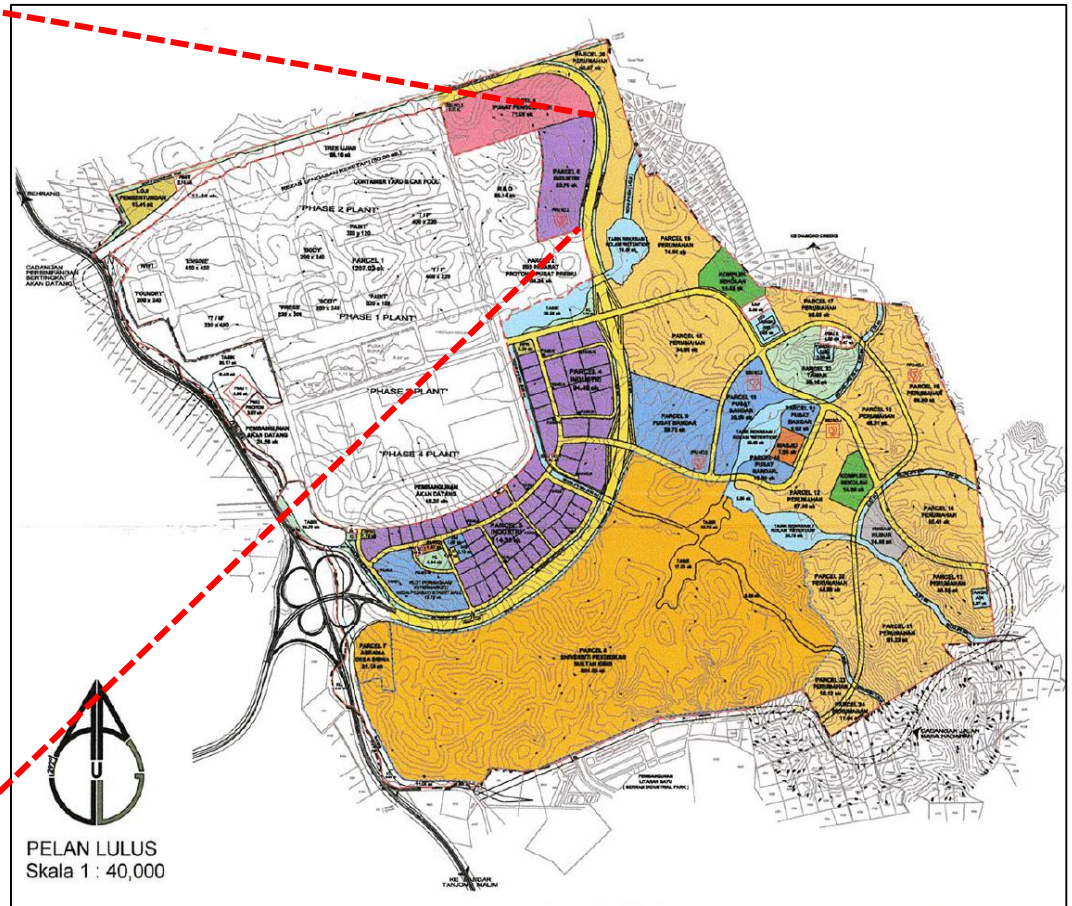
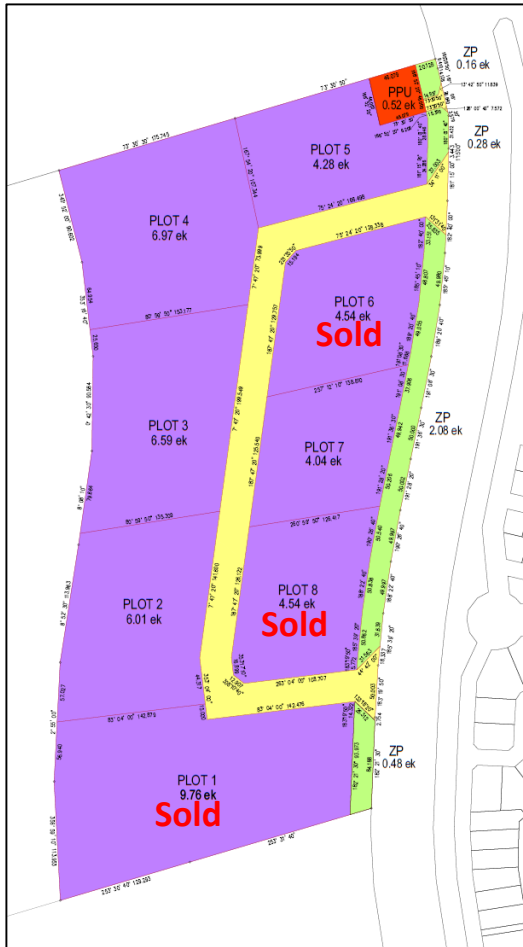


PARCEL 5
Total development area
56.27 acres

Industrial Plots – Parcel 5

Components:-

- 8 industrial plots
- Gross Area : 56.27 acres
- Nett Area : 46.73 acres



VENDORS IN OPERATION (Parcel 3 & 4)



Thank You