



D A S Y

Single Storey Terrace & Single Storey Semi - D

MASTER PLAN

PARCEL 18A



LAYOUT SITE PLAN

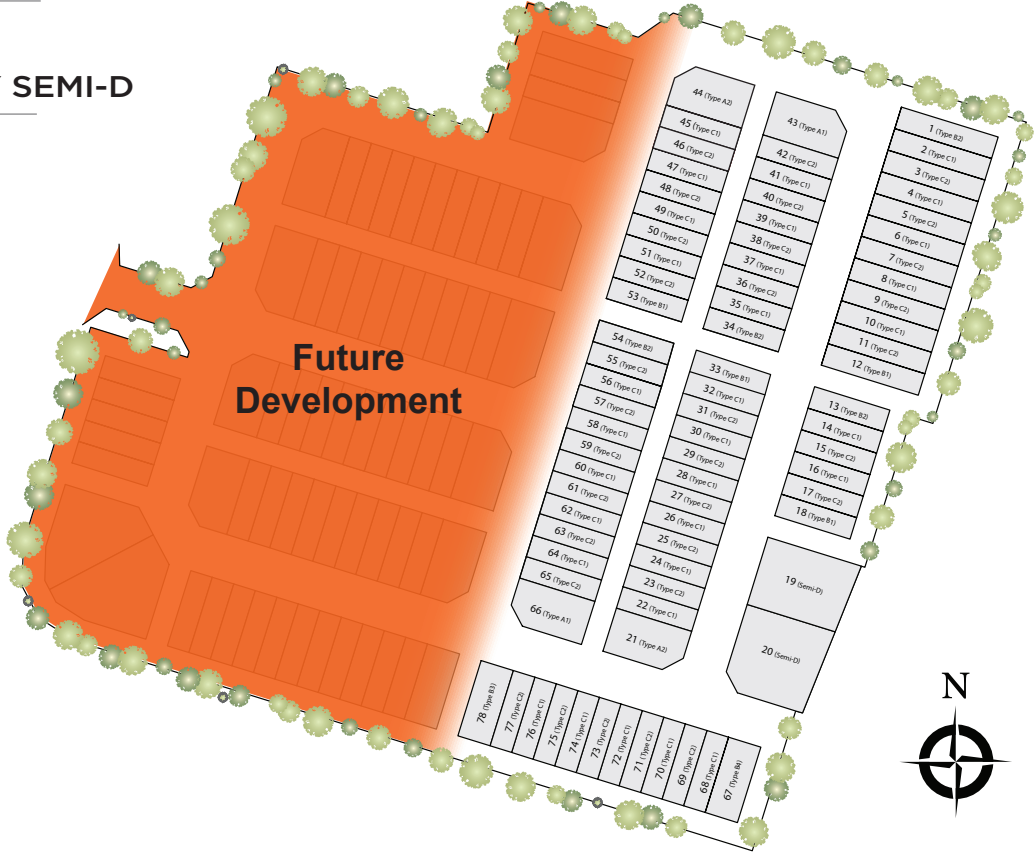
PARCEL 18A-4B (DAISY)

SINGLE STOREY TERRACE

Total Unit
76

SINGLE STOREY SEMI-D

Total Unit
2





FLOOR PLAN

Typical Corner Unit



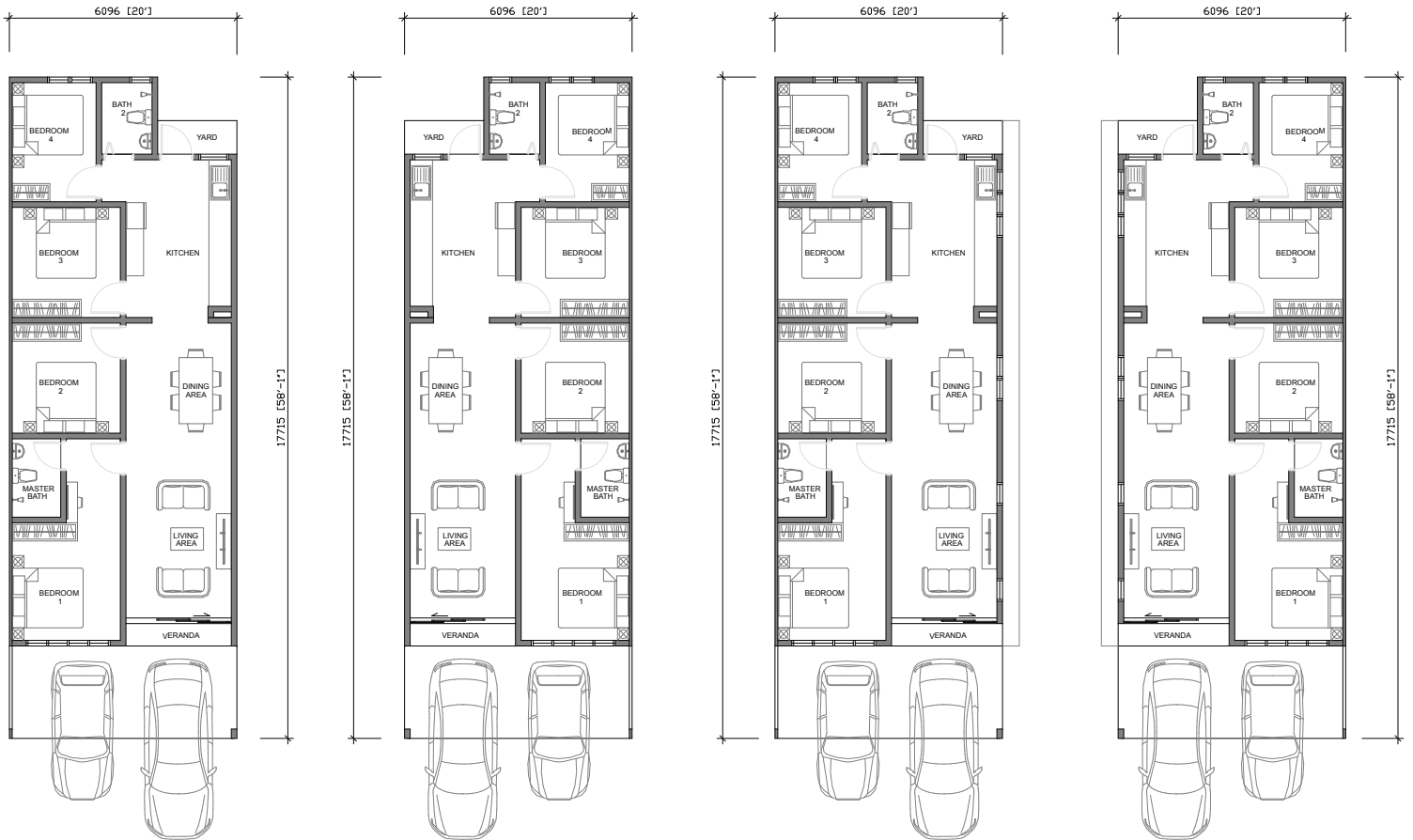
<p>TYPE</p> <p>A1</p>	<p>BEDROOMS</p> <p>4</p> <p>BATHROOMS</p> <p>2</p> <p>APPROX.SQFT</p> <p>1,141 sqft</p> <p>UNIT NUMBER</p> <p>43, 66</p>
------------------------------	---

<p>TYPE</p> <p>A2</p>	<p>BEDROOMS</p> <p>4</p> <p>BATHROOMS</p> <p>2</p> <p>APPROX.SQFT</p> <p>1,141 sqft</p> <p>UNIT NUMBER</p> <p>21, 44</p>
------------------------------	---



FLOOR PLAN

Typical
End Unit



TYPE
B1

BEDROOMS
4

BATHROOMS
2

APPROX.SQFT
1,095 sqft

UNIT NUMBER
12, 18, 33, 53

TYPE
B2

BEDROOMS
4

BATHROOMS
2

APPROX.SQFT
1,095 sqft

UNIT NUMBER
1, 13, 34, 54

TYPE
B3

BEDROOMS
4

BATHROOMS
2

APPROX.SQFT
1,095 sqft

UNIT NUMBER
78

TYPE
B4

BEDROOMS
4

BATHROOMS
2

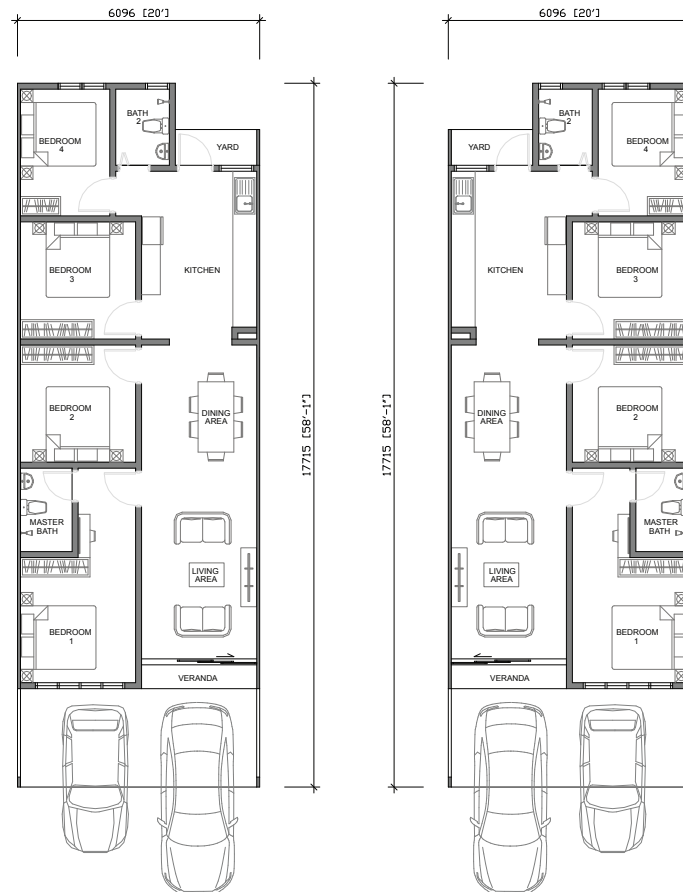
APPROX.SQFT
1,095 sqft

UNIT NUMBER
67



FLOOR PLAN

Typical Intermediate Unit



TYPE C1

BEDROOMS
4

BATHROOMS
2

APPROX.SQFT
1,100 sqft

UNIT NUMBER
2, 4, 6, 8, 10, 14, 16, 22,
24, 26, 28, 30, 32, 35,
37, 39, 41, 45, 47, 49,
51, 56, 58, 60, 62, 64,
68, 70, 72, 74, 76

TYPE C2

BEDROOMS
4

BATHROOMS
2

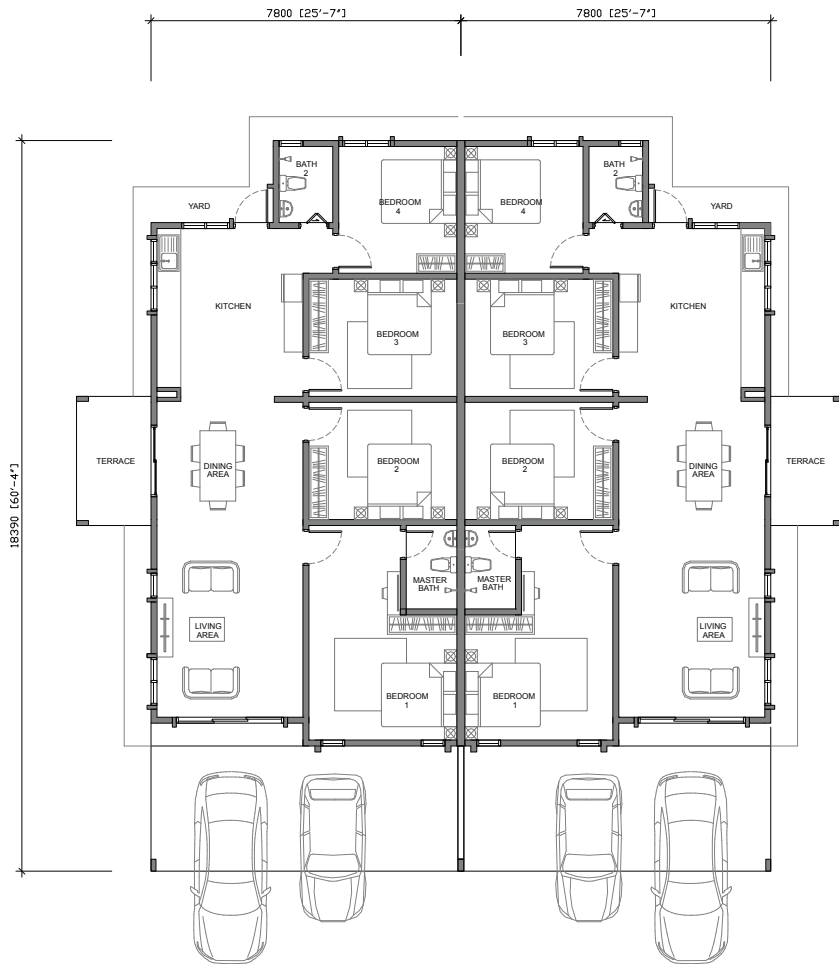
APPROX.SQFT
1,100 sqft

UNIT NUMBER
3, 5, 7, 9, 11, 15, 17, 23,
25, 27, 29, 31, 36, 38,
40, 42, 46, 48, 50, 52,
55, 57, 59, 61, 63, 65,
69, 71, 73, 75, 77



FLOOR PLAN

Semi Detached Unit



TYPE	BEDROOMS
SEMI-D	4
	BATHROOMS
	2
	APPROX.SQFT
	1,525 sqft
	UNIT NUMBER
	19, 20



SPECIFICATION



STRUCTURE	:	Concrete	
WINDOWS	:	Aluminium Frame Casement Window	
SKIRTING	:	Tiles	
DOOR FRAME	:	Metal Door Frame	
IRONMONGERY	:	Quality Locksets With Accessories	
ROOF COVERING	:	Concrete Roof Tiles Metal Roofing	
ROOF FRAMING	:	Steel Trusses	
GENERAL WALL	:	IBS Concrete	
PARTY WALL	:	IBS Concrete	
WALL FINISHES	:	General Wall	Skim Coat and Paint
		Kitchen	Tiles / Skim Coat and Paint
		Bedrooms	Skim Coat and Paint
		Bathrooms	Tiles, Skim Coat and Paint
CEILING	:		Skim Coat / Plasterboard
DOORS	:	Living	Aluminium Frame Glass Sliding Door
		Dining	Aluminium Frame Glass Sliding Door (Corner unit & Semi-D)
		Kitchen	Timber Flush Door
		Bedrooms	Timber Flush Door
		Master Bath	Timber Flush Door
		Bath 2	Acrylic Panel Bifold Door
FLOOR FINISHES	:	Driveway	Cement Render Broom Finish
		Carporch	Tiles
		Verandah	Tiles
		Living	Tiles
		Dining	Tiles
		Kitchen	Tiles
		Bedrooms	Tiles
		Bathrooms	Tiles
		Terrace (Corner unit & Semi-D)	Tiles
SANITARY FITTINGS	:	Wash Basin	
		Water Closet	
		Shower Rose	
		Tap	
		Floor Trap	
		Kitchen Sink	
ELECTRICAL INSTALLATION	:	Light Point	15 (Corner and Semi-D)
			14 (Intermediate and End Unit)
		Ceiling Fan Point	6
		13amp Power Point	10
		Air Cond Point	1
		SMATV Point	1
		Water Heater Point	1
		Telephone Point	1

At the Centre of it All

Positioned at the centre of it all, Proton City offers a world of amenities at its doorstep. Located 5km North of Tanjong Malim, 80km from Kuala Lumpur and 100km of Ipoh, Residents are welcomed to a myriad of quick getaways.



05 459 8989 | 03 2774 5990
www.glenmarieproperties.com

PROTON CITY DEVELOPMENT CORPORATION SDN.BHD.
SUITE 3-1A, LEVEL 3, EON HEAD OFFICE COMPLEX,
NO 2, PERSIARAN KERJAYA, SEKSYEN U1,
SHAH ALAM, 40150, SELANGOR.

• NO. DEVELOPER LICENSE: 7223/01-2029/1513(A) • PERIOD: 25/01/2024-24/01/2029 • ADVERTISING & SALES PERMIT NO : 7223-12/06-2028/0427(N)-(L) • PERIOD : 11/06/2026 -10/06/2028 • APPROVAL OF BUILDING PLAN BY LOCAL AUTHORITIES : TANJONG MALIM DISTRICT COUNCIL • NO. REFERENCE: BIL.(6)DLM.MDTM/KJKB(PB)01/07/2025 • LAND OWNERSHIP: FREEHOLD • LAND ENCOURAGEMENT: NONE • INTEREST RESTRICTIONS: I. THIS LAND CAN ONLY BE TRANSFERRED OR LEASE WITH THE WRITTEN AUTHORITY OF THE STATE AUTHORITY. THESE RESTRICTIONS ARE WAIVED TO THE BUMIPUTERA FOR THE SECOND AND SUBSEQUENT TRANSFER OF OWNERSHIP (THIS RESTRICTION IS ONLY FOR THE PLOTS THAT ARE CHARGED WITH THE BUMIPUTERA QUOTA) II. THIS LAND IS ONLY TRANSFERRED OR LEASE WITH THE WRITTEN AUTHORITY OF THE STATE AUTHORITY • TOTAL UNITS: 78 UNITS • TYPE OF DEVELOPMENT : 1 STORY TERRACE HOUSE (76 UNITS) & 1 STORY DETACHED HOUSE (2 UNITS) • PRICE : 1 STORY TERRACE HOUSE (MIN. RM450,000.00 - MAX. RM560,000.00) & 1 STORY SEMI-DETACHED HOUSE (MIN. RM805,000.00 – MAX. RM840,000.00) • EXPECTED COMPLETION DATE: MAY 2028

Another Project by



A Member of

